

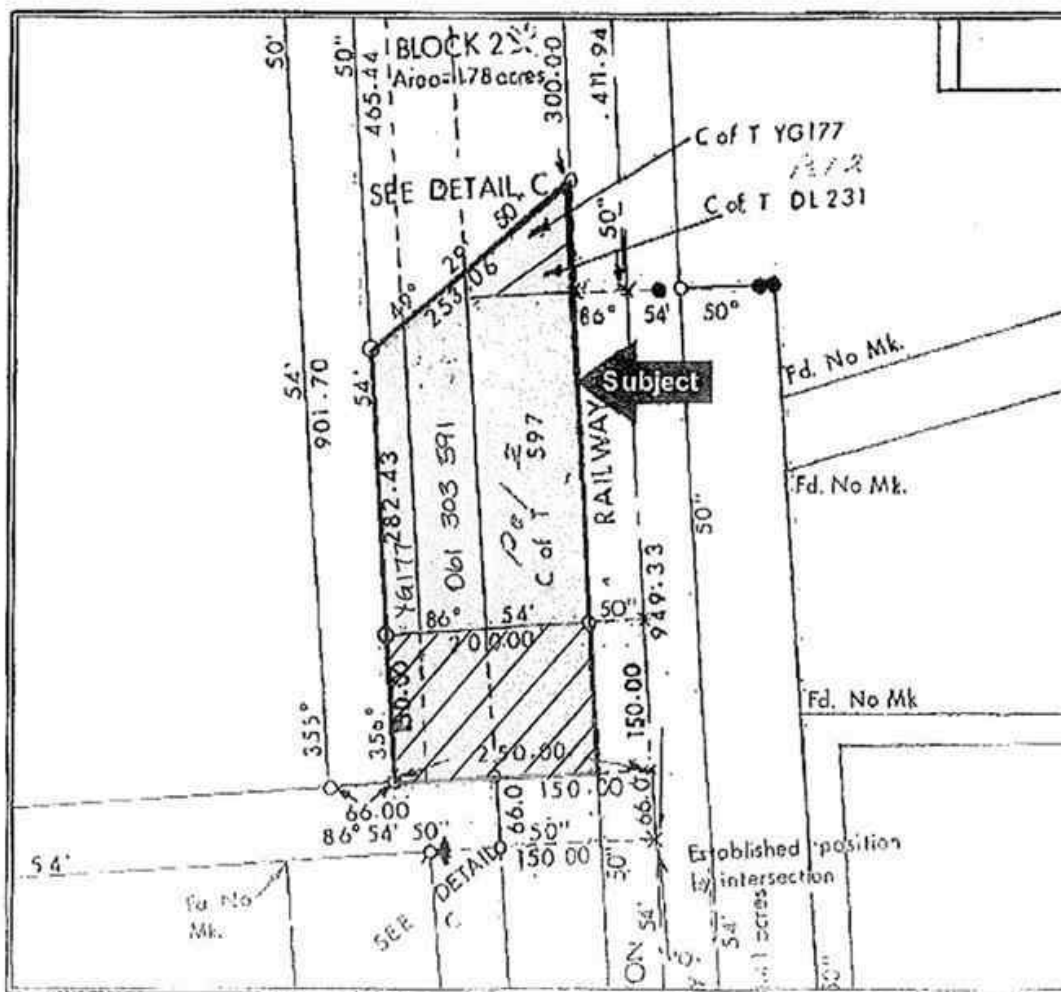


#1 OFFICE
WORLDWIDE
21 YEARS

MLS®-C4292487 - 116 Edwards WY SW - \$1,700,000

SCHEDULE B

PLAN



RE/MAX Real Estate Central
RE/MAX Real Estate (Central)
info@remaxcentral.ab.ca
P: 403-216-1600
M: 403-216-1600

Province
Alberta

Price
\$1,700,000

2.34 acres vacant commercial land Zoned M-1 (Multiple Use) for Sale or Lease or Seller will build to suit whatever buyer/leasee needs. Great location just West of Safeway on First Avenue. North part of this property is known as Fletcher Village.



[RE/MAX Real Estate Central](#)
RE/MAX Real Estate (Central)
info@remaxcentral.ab.ca
P: 403-216-1600
M: 403-216-1600